



1 The Courtyard Eastwood Road, Rayleigh, Essex, SS6 7FU

£325,000



1 The Courtyard Eastwood Road, Rayleigh, Essex, SS6 7FU

£325,000

Fantastic Investment Opportunity!!

New to the market, this impressive spacious ground floor two bedroom apartment is located in the popular Courtyard development in Eastwood Road in the heart of Rayleigh.

The apartment itself benefits from a large open plan living space with contemporary flooring and doors to a small patio area, stylish grey kitchen with integrated appliances, two double bedrooms, two luxury bathrooms, secure entry phone access and neutral decoration throughout.

Each apartment in the development comes with one allocated parking space.

The Courtyard is located in Rayleigh town centre, close to the shops and local supermarket. The mainline railway station is just a short walk away.

The apartment can be bought with tenant in situ, so immediate rental income upon completion of purchase.

247 years remaining of the original 250 year lease.

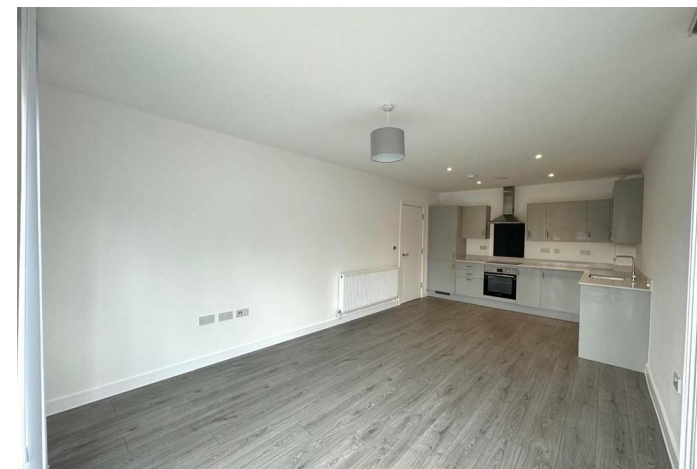
Description

Situation

null

Council Tax Band: C

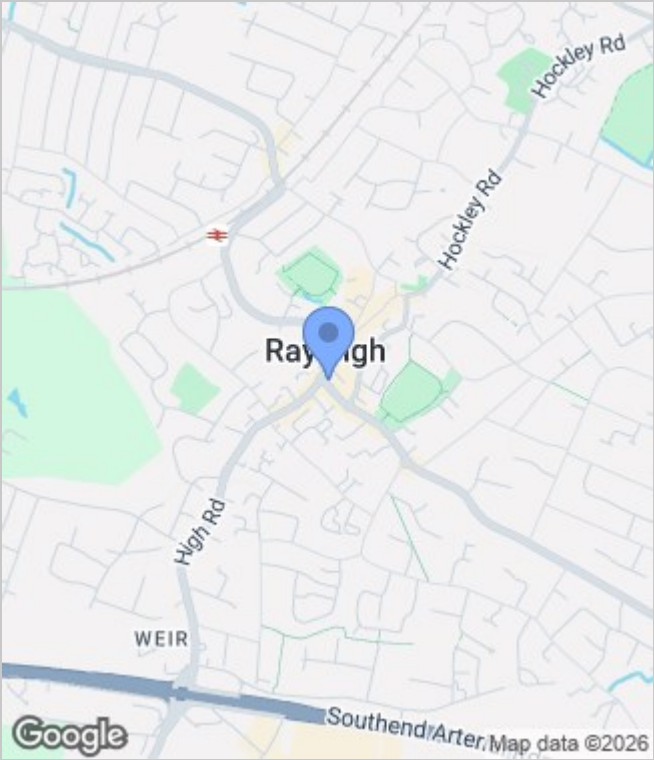
Available:



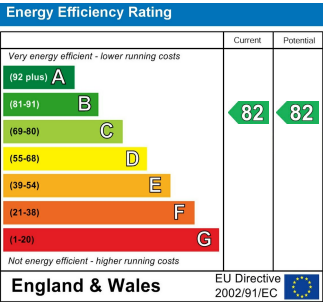
Floor Plans



Area Map



Energy Performance Graph



These particulars, whilst believed to be accurate are set out as a general outline only for guidance and do not constitute any part of an offer or contract. Intending purchasers should not rely on them as statements of representation of fact, but must satisfy themselves by inspection or otherwise as to their accuracy. No person in this firms employment has the authority to make or give any representation or warranty in respect of the property.